

NEGLECTED SPACE TO A SPECIAL PLACE

Turning Brownfields Into Parks

Smart Growth/Smart Energy Conference

December 7, 2007

Catherine Finneran, MassDEP Brownfields Coordinator







Photo Courtesy of Groundwork Lawrence

Brownfields to Green Space



Photo Courtesy of City of Lowell

- Cleanup Process
- Public Involvement
- Financial Incentives
- Liability Protection

What is “Green Space”?

- Open Space
- Undeveloped Space Designated for Parks
- Playgrounds
- Ball Fields
- Trails
- Gardens
- Habitat Restoration and Preservation

Cleanup Process

- Privatized Cleanup Program
- Licensed Site Professionals (LSPs)
- Expedited Rate of Cleanups



Regulatory Flexibility

- Risk Based Cleanup Standards
- Activity and Use Limitations (AULs)
- Special Project Designation
- Presumptive Approvals for Permits



Public Involvement

- Local Information Repository
- MassDEP File Review
- Public Involvement Plan (PIP)
- Technical Assistance Grant (TAG)

MassDEP Assistance

- Technical Assistance
- Brownfield Points of Contact
 - Boston Office: Catherine Finneran/Andrew Loew
 - Northeast Region: Joanne Fagan
 - Southeast Region: Ellie Grillo
 - Western Region: Ben Fish
 - Central Region: Diane Belliveau
- Limited Funding

Financial Assistance

- EPA Brownfields Program
- HUD CDBG Program
- MassDevelopment BRF Program
- EEA Urban Self Help/Self Help
- EOT Transit Oriented Development
- Other Sources

Liability Protection

- Chapter 21E:
 - Eligible Persons
 - Non-Profits and Redevelopment Authorities
 - EDICs
 - Municipalities
 - Tenants
 - Downgradient Property Owners
- Covenant Not to Sue Program

Marblehead MGP Site



Photo Courtesy of National Grid

Marblehead MGP Site



Hope Rubber, Fitchburg



Photo Courtesy of TRC Companies

Hope Rubber, Fitchburg



Photo Courtesy of TRC Companies

Rivers Edge Project



Photo Courtesy of Nangle Consulting Associates

Rivers Edge Project



Photo Courtesy of Nangle Consulting Associates

Nathan Bill Park, Springfield



Photo Courtesy of City of Springfield

Riverside Park, New Bedford

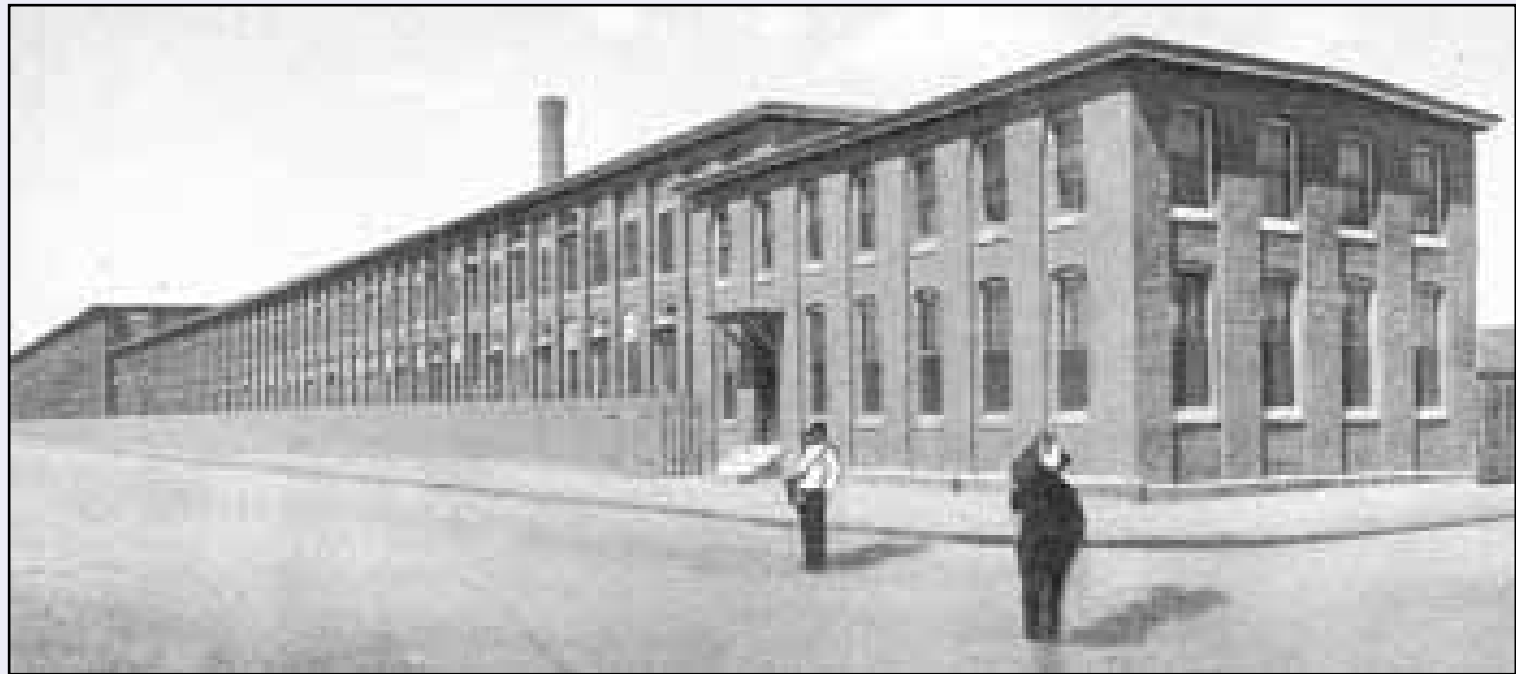


Photo Courtesy of Orchard Street Manor

Riverside Park, New Bedford



Reichhold Chemical, Andover



Photo Courtesy of Shawsheen River Watershed Assoc.

For More Information

Catherine Finneran, MassDEP

(617) 556-1138

Catherine.finneran@state.ma.us

MassDEP Brownfields Website:

<http://www.mass.gov/dep/cleanup/brownfie.htm>

